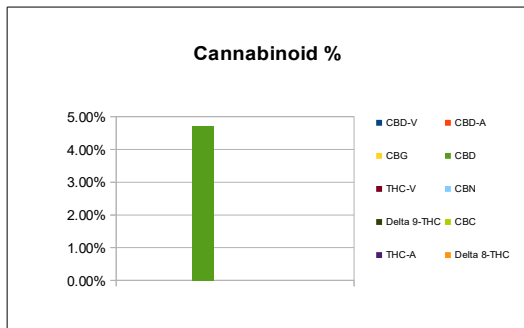



Sample Information		
Sample Identification	Fibromyalgia CBD 25mg	
Laboratory Number	2018004228	
Batch Number	N/A	
Matrix	Capsule	
Analyzed Date	03/30/18	
Extraction Date	03/30/18	
Cannabinoid (HPLC)	%	mg/g
Compound		
CBD-V	0.00%	0.00
CBD-A	0.00%	0.00
CBG	0.00%	0.00
CBD	4.72%	47.23
THC-V	0.00%	0.00
CBN	0.00%	0.00
Delta 9-THC	0.00%	0.00
CBC	0.00%	0.00
THC-A	0.00%	0.00
Delta 8-THC	0.00%	0.00
Cannabinoids Total		
Max Active THC	0.00%	0.00
Max Active CBD	4.72%	47.23
T. Active Cannabinoids	4.72%	47.23
Total Cannabinoids	4.72%	47.23
Max Active Ratios		
N/A :1 CBD to THC		
0.0 :1 THC to CBD		

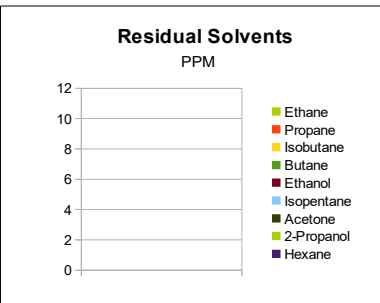


Sample Image	
	
Micro Visual:	NOT TESTED
Percent Moisture	NOT TESTED



ASSOCIATION OF COMMERCIAL CANNABIS LABORATORIES

RS (GCMS-HS)	PPM	RL
Compound		
Ethane	NT	20.0
Propane	NT	5.0
Isobutane	NT	5.0
Butane	NT	5.0
Ethanol	NT	5.0
Isopentane	NT	5.0
Acetone	NT	50.0
2-Propanol	NT	5.0
Hexane	NT	5.0
Heptane	NT	5.0



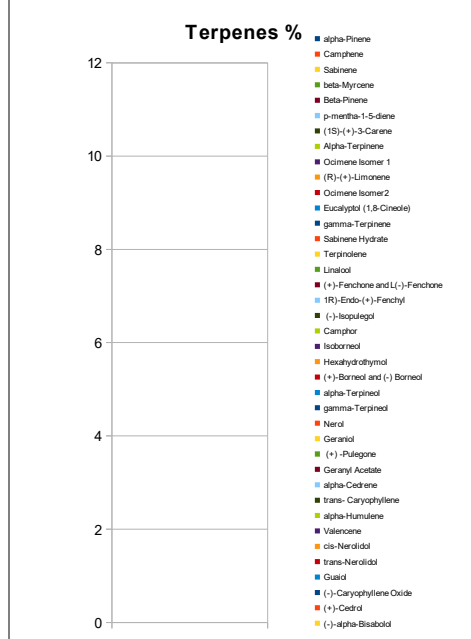
<b>g/capsule</b>	0.54
<b>mg THC/capsule</b>	0
<b>mg CBD/capsule</b>	25.55
<b>(mg) total cannabinoids/capsule</b>	25.55

Metals	PPM	RL
Compound		
Mercury	NT	0.001
Lead	NT	0.010
Arsenic	NT	0.010
Cadmium	NT	0.010

RL=Reporting Limit  
NA=Not Applicable  
NT=Not Tested



Terpene (GC-MS)	%	mg/g
Compound		
alpha-Pinene	NT	NT
Camphene	NT	NT
Sabinene	NT	NT
beta-Myrcene	NT	NT
Beta-Pinene	NT	NT
p-mentha-1-5-diene	NT	NT
(1S)-(+)-3-Carene	NT	NT
Alpha-Terpinene	NT	NT
Ocimene Isomer 1	NT	NT
(R)-(+)-Limonene	NT	NT
Ocimene Isomer2	NT	NT
Eucalyptol (1,8-Cineole)	NT	NT
gamma-Terpinene	NT	NT
Sabinene Hydrate	NT	NT
Terpinolene	NT	NT
Linalool	NT	NT
(+)-Fenchone and L(-)-Fenchone	NT	NT
1R)-Endo-(+)-Fenchyl	NT	NT
(-)-Isopulegol	NT	NT
Camphor	NT	NT
Isoborneol	NT	NT
Hexahydrothymol	NT	NT
(+)-Borneol and (-) Borneol	NT	NT
alpha-Terpineol	NT	NT
gamma-Terpineol	NT	NT
Nerol	NT	NT
Geraniol	NT	NT
(+) -Pulegone	NT	NT
Geranyl Acetate	NT	NT
alpha-Cedrene	NT	NT
trans-Caryophyllene	NT	NT
alpha-Humulene	NT	NT
Valencene	NT	NT
cis-Nerolidol	NT	NT
trans-Nerolidol	NT	NT
Guaiol	NT	NT
(-)-Caryophyllene Oxide	NT	NT
(+)-Cedrol	NT	NT
(-)-alpha-Bisabolol	NT	NT
<b>Total Terpenes</b>	<b>N/A</b>	<b>N/A</b>



Chemist: JW  
Report Expires: 06/30/18